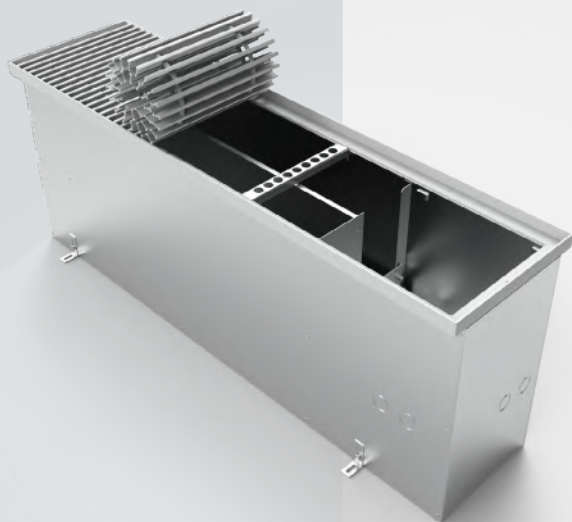




Корпус из нержавеющей стали

**BK.400.260.4TK**



**400**

**260**

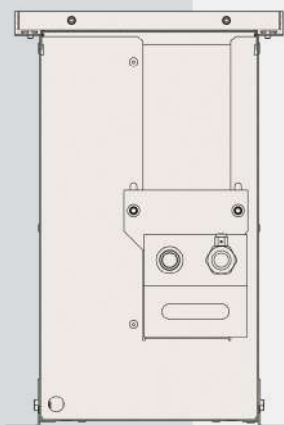
**537-5692**

Высота, мм

Ширина, мм

Теплоотдача, Вт

**400**



**260**

Артикул

Длина

Вес, кг

Теплоотдача  
(95/85/20), Вт

Без решетки

Стоимость  
решетки

С решеткой и  
окантовкой

BK.400.260.600.4TK	600	11,60	349	12389	5368	17756
BK.400.260.650.4TK	650	12,37	419	13055	5675	18731
BK.400.260.700.4TK	700	13,17	488	13722	6147	19869
BK.400.260.750.4TK	750	13,94	558	14389	6454	20843
BK.400.260.800.4TK	800	14,72	628	15056	6762	21818
BK.400.260.850.4TK	850	15,51	698	15723	7233	22956
BK.400.260.900.4TK	900	16,29	768	16389	7541	23930
BK.400.260.950.4TK	950	17,09	837	17056	8013	25069
BK.400.260.1000.4TK	1000	17,86	907	17723	8320	26043
BK.400.260.1050.4TK	1050	18,66	977	18390	8792	27181
BK.400.260.1100.4TK	1100	19,43	1047	19057	9099	28156
BK.400.260.1150.4TK	1150	20,21	1116	19723	9406	29130
BK.400.260.1200.4TK	1200	21,08	1186	20445	9878	30324
BK.400.260.1250.4TK	1250	21,86	1256	21112	10186	31298
BK.400.260.1300.4TK	1300	22,65	1326	21779	10657	32436
BK.400.260.1350.4TK	1350	23,43	1396	22446	10965	33410
BK.400.260.1400.4TK	1400	24,22	1465	23113	11436	34549
BK.400.260.1450.4TK	1450	25,00	1535	23779	11744	35523
BK.400.260.1500.4TK	1500	25,96	1605	24855	12215	37071
BK.400.260.1550.4TK	1550	26,74	1675	25522	12523	38045
BK.400.260.1600.4TK	1600	27,52	1744	26189	12830	39019
BK.400.260.1650.4TK	1650	28,31	1814	26856	13302	40158
BK.400.260.1700.4TK	1700	29,09	1884	27522	13609	41132
BK.400.260.1750.4TK	1750	29,88	1954	28189	14081	42270
BK.400.260.1800.4TK	1800	30,66	2024	28856	14389	43244
BK.400.260.1850.4TK	1850	31,45	2093	29523	14860	44383
BK.400.260.1900.4TK	1900	32,23	2163	30190	15168	45357
BK.400.260.1950.4TK	1950	33,08	2233	30912	15475	46387
BK.400.260.2000.4TK	2000	33,97	2303	31801	15947	47748
BK.400.260.2050.4TK	2050	34,75	2372	32468	16254	48722
BK.400.260.2100.4TK	2100	35,54	2442	33135	16726	49860
BK.400.260.2150.4TK	2150	36,32	2512	33801	17033	50835
BK.400.260.2200.4TK	2200	37,11	2582	34468	17505	51973
BK.400.260.2250.4TK	2250	37,89	2652	35135	17812	52947
BK.400.260.2300.4TK	2300	38,66	2721	35802	18120	53922
BK.400.260.2350.4TK	2350	39,46	2791	36469	18591	55060
BK.400.260.2400.4TK	2400	40,24	2861	37135	18899	56034
BK.400.260.2450.4TK	2450	41,20	2931	38211	19371	57582
BK.400.260.2500.4TK	2500	41,97	3000	38878	19678	58556
BK.400.260.2550.4TK	2550	42,77	3070	39545	20150	59694
BK.400.260.2600.4TK	2600	43,54	3140	40212	20457	60669
BK.400.260.2650.4TK	2650	44,34	3210	40878	20929	61807
BK.400.260.2700.4TK	2700	45,19	3280	41600	21236	62837
BK.400.260.2750.4TK	2750	45,97	3349	42267	21544	63811
BK.400.260.2800.4TK	2800	46,76	3419	42934	22015	64949
BK.400.260.2850.4TK	2850	47,54	3489	43601	22323	65924
BK.400.260.2900.4TK	2900	48,34	3559	44268	22794	67062
BK.400.260.2950.4TK	2950	49,11	3628	44934	23102	68036
BK.400.260.3000.4TK	3000	49,91	3698	45601	23573	69175