



## ВКВ.075.260.2ТГ



Корпус из оцинкованной стали

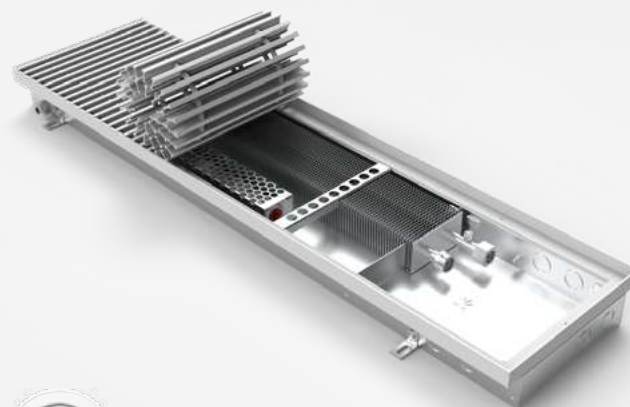
**75      260      546-5789**

Высота, мм

Ширина, мм

Теплоотдача, Вт

Корпус из нержавеющей стали



На сайт

| Артикул             | Вес, кг | Теплоотдача (95/85/20), Вт | Стоимость решетки | ВКВ.075.260.2ТГ              |                             |
|---------------------|---------|----------------------------|-------------------|------------------------------|-----------------------------|
|                     |         |                            |                   | Корпус из оцинкованной стали | Корпус из нержавеющей стали |
| ВКВ.75.260.600.2ТГ  | 6,15    | 546                        | 6461              |                              |                             |
| ВКВ.75.260.650.2ТГ  | 6,69    | 655                        | 6832              |                              |                             |
| ВКВ.75.260.700.2ТГ  | 7,12    | 765                        | 7399              |                              |                             |
| ВКВ.75.260.750.2ТГ  | 7,53    | 874                        | 7769              |                              |                             |
| ВКВ.75.260.800.2ТГ  | 7,94    | 983                        | 8139              |                              |                             |
| ВКВ.75.260.850.2ТГ  | 8,36    | 1092                       | 8707              |                              |                             |
| ВКВ.75.260.900.2ТГ  | 8,81    | 1202                       | 9077              |                              |                             |
| ВКВ.75.260.950.2ТГ  | 9,30    | 1311                       | 9645              |                              |                             |
| ВКВ.75.260.1000.2ТГ | 9,71    | 1420                       | 10015             |                              |                             |
| ВКВ.75.260.1050.2ТГ | 10,13   | 1529                       | 10583             |                              |                             |
| ВКВ.75.260.1100.2ТГ | 10,54   | 1638                       | 10953             |                              |                             |
| ВКВ.75.260.1150.2ТГ | 10,95   | 1748                       | 11323             |                              |                             |
| ВКВ.75.260.1200.2ТГ | 11,59   | 1857                       | 11891             |                              |                             |
| ВКВ.75.260.1250.2ТГ | 12,00   | 1966                       | 12261             |                              |                             |
| ВКВ.75.260.1300.2ТГ | 12,49   | 2075                       | 12829             |                              |                             |
| ВКВ.75.260.1350.2ТГ | 12,89   | 2185                       | 13199             |                              |                             |
| ВКВ.75.260.1400.2ТГ | 13,32   | 2294                       | 13767             |                              |                             |
| ВКВ.75.260.1450.2ТГ | 13,73   | 2403                       | 14137             |                              |                             |
| ВКВ.75.260.1500.2ТГ | 14,72   | 2512                       | 14704             |                              |                             |
| ВКВ.75.260.1550.2ТГ | 15,20   | 2621                       | 15074             |                              |                             |
| ВКВ.75.260.1600.2ТГ | 15,60   | 2731                       | 15444             |                              |                             |
| ВКВ.75.260.1650.2ТГ | 16,07   | 2840                       | 16012             |                              |                             |
| ВКВ.75.260.1700.2ТГ | 16,47   | 2949                       | 16382             |                              |                             |
| ВКВ.75.260.1750.2ТГ | 16,90   | 3058                       | 16950             |                              |                             |
| ВКВ.75.260.1800.2ТГ | 17,38   | 3168                       | 17320             |                              |                             |
| ВКВ.75.260.1850.2ТГ | 17,86   | 3277                       | 17888             |                              |                             |
| ВКВ.75.260.1900.2ТГ | 18,27   | 3386                       | 18258             |                              |                             |
| ВКВ.75.260.1950.2ТГ | 18,83   | 3495                       | 18628             |                              |                             |
| ВКВ.75.260.2000.2ТГ | 19,35   | 3605                       | 19196             |                              |                             |
| ВКВ.75.260.2050.2ТГ | 19,76   | 3714                       | 19566             |                              |                             |
| ВКВ.75.260.2100.2ТГ | 20,18   | 3823                       | 20134             |                              |                             |
| ВКВ.75.260.2150.2ТГ | 20,71   | 3932                       | 20504             |                              |                             |
| ВКВ.75.260.2200.2ТГ | 21,14   | 4041                       | 21072             |                              |                             |
| ВКВ.75.260.2250.2ТГ | 21,55   | 4151                       | 21442             |                              |                             |
| ВКВ.75.260.2300.2ТГ | 21,96   | 4260                       | 21812             |                              |                             |
| ВКВ.75.260.2350.2ТГ | 22,38   | 4369                       | 22379             |                              |                             |
| ВКВ.75.260.2400.2ТГ | 22,79   | 4478                       | 22750             |                              |                             |
| ВКВ.75.260.2450.2ТГ | 23,89   | 4588                       | 23317             |                              |                             |
| ВКВ.75.260.2500.2ТГ | 24,32   | 4697                       | 23687             |                              |                             |
| ВКВ.75.260.2550.2ТГ | 24,74   | 4806                       | 24255             |                              |                             |
| ВКВ.75.260.2600.2ТГ | 25,15   | 4915                       | 24625             |                              |                             |
| ВКВ.75.260.2650.2ТГ | 25,68   | 5025                       | 25193             |                              |                             |
| ВКВ.75.260.2700.2ТГ | 26,13   | 5134                       | 25563             |                              |                             |
| ВКВ.75.260.2750.2ТГ | 26,54   | 5243                       | 25933             |                              |                             |
| ВКВ.75.260.2800.2ТГ | 26,96   | 5352                       | 26501             |                              |                             |
| ВКВ.75.260.2850.2ТГ | 27,37   | 5461                       | 26871             |                              |                             |
| ВКВ.75.260.2900.2ТГ | 27,97   | 5571                       | 27439             |                              |                             |
| ВКВ.75.260.2950.2ТГ | 28,38   | 5680                       | 27809             |                              |                             |
| ВКВ.75.260.3000.2ТГ | 28,81   | 5789                       | 28377             |                              |                             |

| Длина | Оцинкованная сталь |            | Нержавеющая сталь |            |
|-------|--------------------|------------|-------------------|------------|
|       | Без решетки        | С решеткой | Без решетки       | С решеткой |
| 600   | 19776              | 26237      | 21215             | 27677      |
| 650   | 20744              | 27575      | 22282             | 29113      |
| 700   | 21186              | 28585      | 22827             | 30227      |
| 750   | 21627              | 29397      | 23373             | 31143      |
| 800   | 22069              | 30208      | 23919             | 32059      |
| 850   | 22510              | 31218      | 24465             | 33173      |
| 900   | 22778              | 31856      | 24840             | 33917      |
| 950   | 23633              | 33278      | 25793             | 35438      |
| 1000  | 24074              | 34089      | 26339             | 36354      |
| 1050  | 24516              | 35099      | 26885             | 37468      |
| 1100  | 24958              | 35911      | 27431             | 38384      |
| 1150  | 25149              | 36472      | 27730             | 39053      |
| 1200  | 30510              | 42401      | 33137             | 45027      |
| 1250  | 30579              | 42840      | 33314             | 45575      |
| 1300  | 31299              | 44127      | 34135             | 46964      |
| 1350  | 31740              | 44939      | 34680             | 47879      |
| 1400  | 32181              | 45948      | 35226             | 48992      |
| 1450  | 32622              | 46759      | 35771             | 49908      |
| 1500  | 37670              | 52374      | 40818             | 55522      |
| 1550  | 42779              | 57853      | 45975             | 61049      |
| 1600  | 43098              | 58543      | 46400             | 61845      |
| 1650  | 43261              | 59274      | 46671             | 62683      |
| 1700  | 43581              | 59964      | 47097             | 63479      |
| 1750  | 43902              | 60852      | 47523             | 64473      |
| 1800  | 44587              | 61907      | 48310             | 65630      |
| 1850  | 45537              | 63425      | 49358             | 67246      |
| 1900  | 45852              | 64110      | 49779             | 68037      |
| 1950  | 50272              | 68900      | 54255             | 72883      |
| 2000  | 50771              | 69967      | 54928             | 74124      |
| 2050  | 51064              | 70630      | 55328             | 74894      |
| 2100  | 51210              | 71344      | 55582             | 75715      |
| 2150  | 52722              | 73225      | 57185             | 77688      |
| 2200  | 53008              | 74080      | 57578             | 78649      |
| 2250  | 53295              | 74737      | 57971             | 79412      |
| 2300  | 53582              | 75394      | 58363             | 80175      |
| 2350  | 53869              | 76248      | 58756             | 81136      |
| 2400  | 54155              | 76905      | 59149             | 81899      |
| 2450  | 62492              | 85809      | 67445             | 90762      |
| 2500  | 63714              | 87401      | 68762             | 92449      |
| 2550  | 63953              | 88208      | 69108             | 93363      |
| 2600  | 64193              | 88818      | 69454             | 94080      |
| 2650  | 64624              | 89817      | 69990             | 95183      |
| 2700  | 64903              | 90466      | 70376             | 95939      |
| 2750  | 65141              | 91074      | 70721             | 96654      |
| 2800  | 65379              | 91880      | 71065             | 97566      |
| 2850  | 65617              | 92488      | 71410             | 98281      |
| 2900  | 70057              | 97495      | 75906             | 103345     |
| 2950  | 70270              | 98079      | 76227             | 104035     |
| 3000  | 71530              | 99906      | 76547             | 104924     |